



House - End Terrace

# RAYNHAM STREET, HERTFORD, HERTFORDSHIRE, SG13

Guide Price  
**£650,000**

## FEATURES

- Attractive Extended 3 Bedroom Victorian Home
- Prime SG13 Location
- Catchment Area For Outstanding Schools
- West Facing Rear Garden
- Outbuilding With Power, Heating & Plumbing
- Ground Floor W/C/Cloakroom
- Period Features Throughout
- Close To Hertford East BR & Town Centre



# Raynham Street Hertford SG13 7DE

Within close proximity to Hertford Town Centre & Hertford East BR (with direct services to London Liverpool Street), the property sits in the catchment area for highly regarded local schools.

Beautifully blending period charm with modern touches, this characterful home features double glazed sash-style windows and tasteful décor throughout.

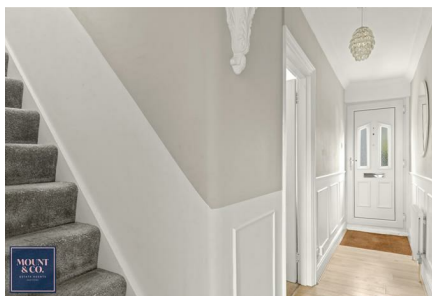
The ground floor offers an inviting entrance hall with elegant wall paneling leading to a spacious lounge with symmetrical double windows, a central chimney breast and bespoke built-in storage on either side creating both a practical and stylish focal point. At the heart of the home is a stylish open-plan kitchen/dining area, which flows seamlessly into an additional playroom/sitting room at the rear of the property with patio doors opening out to the private garden - perfect for family living or entertaining. A ground floor W/C/Cloakroom adds convenience, while there is also a useful basement for storage or potential further use.

Upstairs there are three bedrooms, complemented by a beautifully appointed four-piece bathroom suite featuring a double shower and elegant freestanding bath.

Outside, the west-facing gardens enjoys plenty of sun, with patio area and astro turf lawn for easy maintenance. An outbuilding with power, heating and plumbing offers versatile use as a home office, salon, gym, or studio. The property also benefits from side access to the garden.

Contact Mount & Co. today to arrange your viewing.





MOUNT & CO | 2 MARKET PLACE, HERTFORD, HERTFORDSHIRE, SG14 1DF





**MOUNT  
& CO.**  
ESTATE AGENTS  
HERTFORD

MOUNT & CO | 2 MARKET PLACE, HERTFORD, HERTFORDSHIRE, SG14 1DF





MOUNT & CO | 2 MARKET PLACE, HERTFORD, HERTFORDSHIRE, SG14 1DF

Call us on

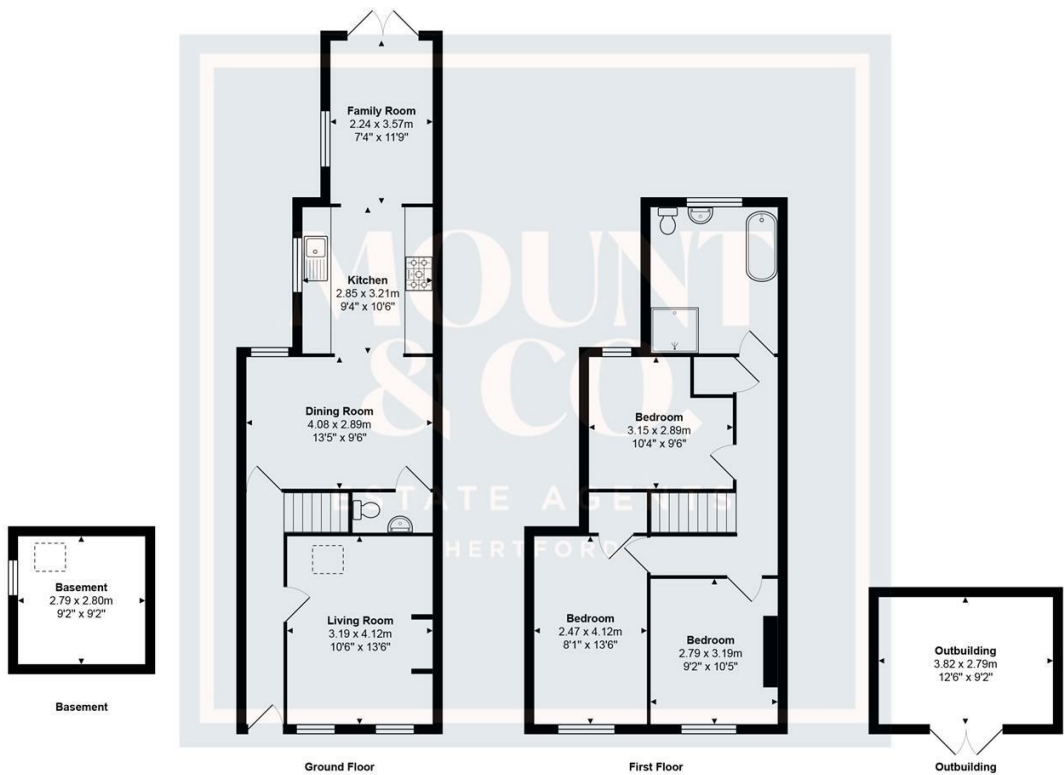
01992 937 011

hello@mountandco.co.uk

https://www.mountandco.co.uk/

Council Tax Band

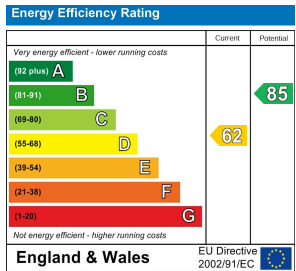
D



Total Area: approx. 116.3 m<sup>2</sup> ... 1251 ft<sup>2</sup>

THE FLOORPLAN IS FOR ILLUSTRATIVE PURPOSES ONLY AND IS NOT TO SCALE.  
Measurements and features are approximate and may differ from the actual property. Verify all details independently; no liability is accepted for errors or omissions.

Property marketing provided by www.fotomarketing.co.uk



Agents Note: Whilst every care has been taken to prepare these particulars, they are for guidance purposes only. All measurements are approximate and are for general guidance purposes only and whilst every care has been taken to ensure their accuracy, they should not be relied upon and potential buyers are advised to recheck the measurements.